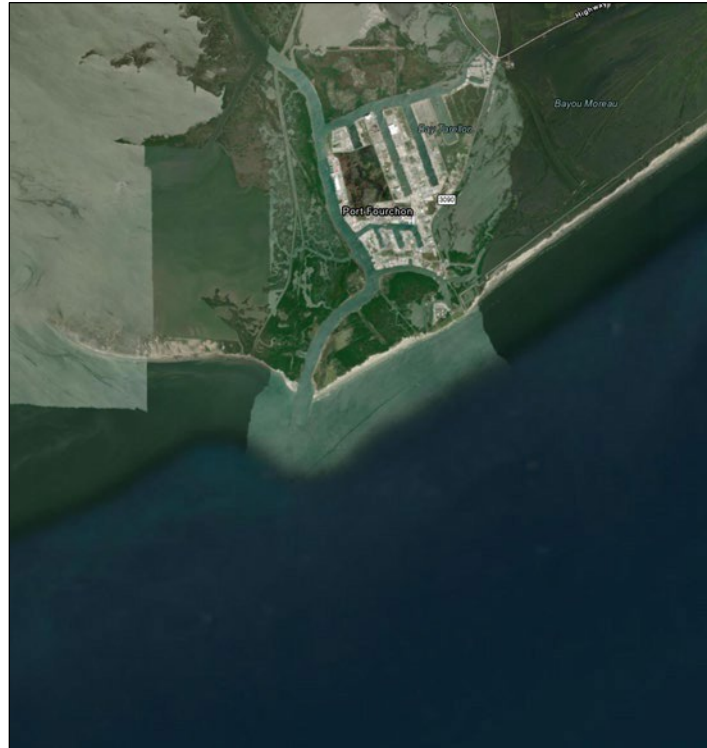




Port Fourchon Belle Pass Channel Deepening Project, Louisiana



Appendix A: National Historic Preservation Act

January 2025

The U.S. Department of Defense is committed to making its electronic and information technologies accessible to individuals with disabilities in accordance with Section 508 of the Rehabilitation Act (29 U.S.C. 794d), as amended in 1998. For persons with disabilities experiencing difficulties accessing content, please use the form @ <https://dodcio.defense.gov/DoDSection508/Section-508-Form/>. In this form, please indicate the nature of your accessibility issue/problem and your contact information so we can address your issue or question. For more information about Section 508, please visit the DoD Section 508 website. <https://dodcio.defense.gov/DoDSection508.aspx>.

From: Ostahowski, Brian E CIV USARMY CEMVN (USA)
To: [DCRT Section 106](#)
Subject: CEMVN Port Fourchon Belle Pass Channel Deepening 5106 Consultation - No Historic Properties Affected - SHPO
Date: Monday, December 4, 2023 10:59:00 AM
Attachments: [CEMVN Port Fourchon Channel Deepening 5106 No Historic Properties SHPO.pdf](#)

EXTERNAL EMAIL Please do not click on links or attachments unless you know the content is safe.

Good [Morning](#), SHPO,

Attached please find a signed consultation letter:

RE: Section 106 Review Consultation

Undertaking: Port Fourchon Belle Pass Channel Deepening Maintenance and Dredge Material Disposal, Lafourche Parish, Louisiana (Lat. 29.085480° Long. -90.226143°)

Determination: No Historic Properties Affected

Should you have any questions or need additional information about this Undertaking, please contact me at [REDACTED] or Jason A. Emery, Chief of Cultural & Social Resources, [REDACTED].

Thank you very much.

V/r,

Brian

[REDACTED]



DEPARTMENT OF THE ARMY
CORPS OF ENGINEERS, NEW ORLEANS DISTRICT
7400 LEAKE AVE
NEW ORLEANS LA 70118-3651

December 4, 2023

Regional Planning and
Environment Division, South
Environmental Planning Branch
Attn: CEMVN-PDS-N

Kristin Sanders, SHPO
LA State Historic Preservation Officer
P.O. Box 44247
Baton Rouge, LA 70804-4241

No known historic properties will be affected by this undertaking. Therefore, our office has no objection to the implementation of this project. This effect determination could change should new information come to our attention.

A handwritten signature in blue ink that reads "Kristin P. Sanders".

Kristin P. Sanders
State Historic Preservation Officer
Date

RE: Section 106 Review Consultation

Undertaking: Port Fourchon Belle Pass Channel Deepening Maintenance and Dredge Material Disposal, Lafourche Parish, Louisiana (Lat. 29.085480° Long. -90.226143°)
Determination: No Historic Properties Affected

Dear Ms. Sanders:

The U.S. Army Corps of Engineers, New Orleans District (CEMVN), is preparing an Environmental Assessment (EA) to evaluate a proposed dredging maintenance and material disposal project to deepen the Belle Pass federal channel located south of Port Fourchon in Lafourche Parish, Louisiana. Recently, the National Oceanic and Atmospheric Administration (NOAA), in conjunction with the Greater Lafourche Port Commission (GLPC), completed a Supplemental EA to deepen the Belle Pass federal channel and four boat slips within the Port Fourchon shipyard (NOAA 2023). CEMVN's proposed project will further deepen the same portion of the federal channel and include a long-term dredging-maintenance operations plan for the channel after the NOAA project is completed. The GLPC is also the Non-Federal Sponsor of CEMVN's project, which is authorized by Section 203 of the Water Resources and Development Act (WRDA) of 1986 (PL 998-662), as modified by Section 1014 of Water Resources and Reform Development Act (WRRDA) 2014.

CEMVN, in partial fulfillment of responsibilities under Executive Order 13175, the National Environmental Policy Act, and Section 106 of the National Historic Preservation Act, previously initiated the consultation process for the Belle Pass federal channel deepening and dredge disposal project in 2019. As part of that initial consultation, CEMVN submitted a Draft Environmental Impact Study (DEIS) prepared by the GLPC and a cultural resources assessment and remote sensing survey prepared by Coastal Environments, Inc. (Godzinski et al. 2018). Since that time, however, the scope and scale of CEMVN's project have been significantly reduced as a result of the NOAA project.

16LF249 have an undetermined NRHP eligibility status, but will be avoided by dredging operations (**Figure 4 and 5**).

Historical aerial images and topographic maps document the dredge disposal areas experienced significant shoreline erosion and disturbance within the last 50 years. The eastern disposal area underwent two terrestrial reconnaissance cultural resources surveys (Gagliano et al. 1976; Beavers and Lamb 1979) and two terrestrial Phase I cultural resources investigations (Braud et al. 2008; Coughlin 2012) when it was a part of the Fourchon Beach shoreline. No cultural resources were identified during these surveys (**Figure 7**). The initial Belle Pass channel dredging operations previously utilized the proposed western disposal area as a disposal site when it was located along Fourchon Beach before erosion retreated the shoreline to its current location (**Figure 2**). In addition, a submerged pipeline impacted the western portion of this disposal area (**Figure 7**). Considered together, previous disturbances and severe erosion have eliminated the potential for the dredge disposal areas to yield intact archaeological deposits. Last, CEMVN reviewed NOAA's Coast Survey's Automated Wreck and Obstruction Information System (AWOIS) database, which did not identify any submerged resources within the proposed disposal areas.

Assessment of Effects

Based on a background and literature review, CEMVN has determined that there are no historic properties, as defined in 36 CFR 800.16 (l) in the APE. Therefore, CEMVN is making a finding of **No Historic Properties Affected** for this undertaking and submitting it to you for review and comment. This project will be subject to the standard change in scope of work, unexpected discovery, and unmarked human burial sites act provisions. CEMVN requests your comments within 30 days, per 36 CFR 800.5(c)

We look forward to your concurrence with this determination. Should you have any questions or need additional information with this undertaking, please contact either Brian Ostahowski, Archaeologist and Tribal Liaison at (504) 862-2188 or brian.e.ostahowski@usace.army.mil; or Jason A. Emery, Chief of Cultural & Social Resources, (504) 862-2364 or jason.a.emery@usace.army.mil.

Sincerely,

WILLIAMS.ER
IC.MITCHELL.
1065454323

Digitally signed by
WILLIAMS.ERIC.MITC
HELL.1065454323
Date: 2023.12.04
09:34:01 -06'00'

ERIC M. WILLIAMS
Chief, Environmental Planning Branch

CC: An electronic copy of this letter with enclosures will be provided to the Section 106 Inbox, section106@crt.la.gov.

Distribution List:



1. LA SHPO
2. Chitimacha Tribe of Louisiana
3. Coushatta Tribe of Louisiana
4. Jena Band of Choctaw Indians
5. Mississippi Band of Choctaw Indians
6. Tunica-Biloxi Tribe of Louisiana

References:

Beavers, Richard and Teresia Lamb

1979 *A Level I Cultural Resources Survey and Assessment of Fourchon Island, Lafourche Parish, Louisiana*. Report prepared by the University of New Orleans for the Edward Wisner Donation Advisory Committee (LA DOA Report No. 22-0645).

Braud, Melissa R. with contributions by: Richard A. Weinstein, Paul V. Heinrich, William D. Reeves, Donald Davis, George J. Castille III and Joanne Ryan

2008 *Cultural Resources Survey of the Caminada Headland Restoration Feasibility Study, Lafourche and Jefferson Parishes, Louisiana*. Report prepared by Coastal Environments, Inc. for T. Baker Smith, Inc. (LA DOA Report No. 22-2966).

Coughlin, Sean

2012 *Negative Findings Report Related to the Phase I Cultural Resources Investigation of the Caminada Headland Beach Resotation Area in LaFourche Parish, Louisiana*. Report prepared by R. Christopher Goodwin & Associates, Inc. for Coastal Engineering Consultants, Inc. (LA DOA Report No. 22-3966).

Gagliano, Sherwood, M., Richard A. Weinstein, and Eileen K. Burden

1976 *Archaeological Survey of the Port Fourchon Area, Lafourche Parish, Louisiana*. Report prepared by Coastal Environments, Inc. for the Greater Lafourche Port Commission (LA DOA Report No. 22-0002).

Godzinski, Michael, Dyane B. Lee, Elizabeth V. Williams, Donna Greer, and Elena Ricci.

2018 *Cultural Resources Assessment for the Port Fourchon Project and Results of an Initial Remote Sensing Marine Survey, Lafourche Parish, Louisiana*. Report prepared by Coastal Environments, Inc. for GIS Engineering, LLC. (LA DOA Report No. 22-6170).

National Oceanic and Atmospheric Administration

2023 *West Fourchon Marsh Creation & Nourishment Project, Supplemental Environmental Assessment, Fed No. TE-0134, Lafourche Parish, Louisiana, October 2023*.



Figure 1. Project Overview Map. Proposed Federal Channel Dredging Limits are Outlined in Blue and Proposed Dredge Disposal Locations are Outlined in Yellow.

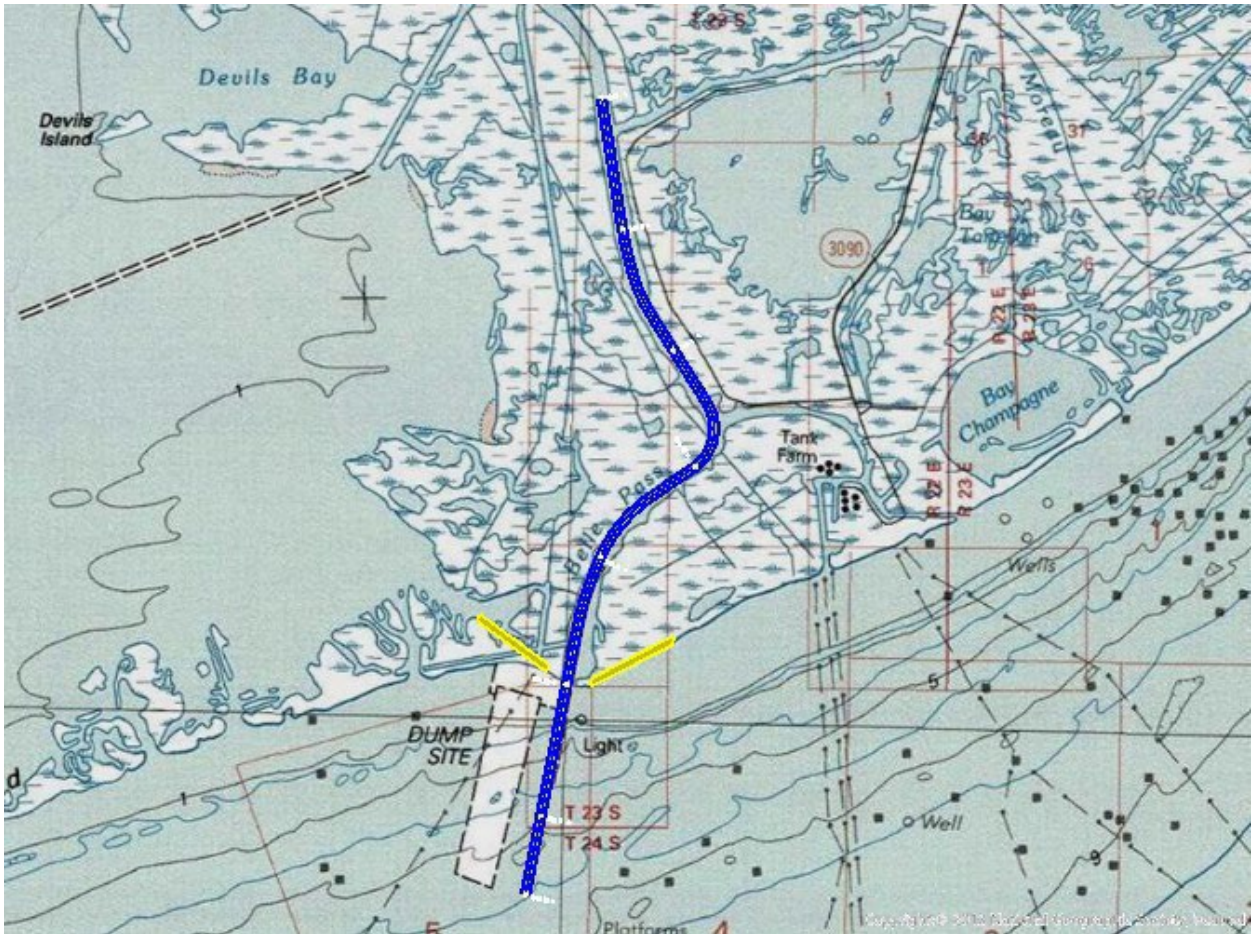


Figure 2. Project Area of Potential Effects (APE) overlaid on the Terrebonne Bay 7.5" US Topographic Map (1983).

FOUO Statement: CONFIDENTIAL DO NOT DISCLOSE. This document was prepared by the CEMVN-PDP-CSR. It is protected from public disclosure in accordance with Section 304 of the National Historic Preservation Act, 54 U.S.C. 307103, and 36 CFR 800.11 (c).

Figure 3. Project APE with Previous Cultural Resources Survey and Previously Identified Archaeological Sites/Shipwrecks Identified.

FOUO Statement: CONFIDENTIAL DO NOT DISCLOSE. This document was prepared by the CEMVN-PDP-CSR. It is protected from public disclosure in accordance with Section 304 of the National Historic Preservation Act, 54 U.S.C. 307103, and 36 CFR 800.11 (c).

Figure 4. The Northern Portion of the Inland Federal Channel with Archaeological Sites 16LF83 and 16LF249 Identified.

FOUO Statement: CONFIDENTIAL DO NOT DISCLOSE. This document was prepared by the CEMVN-PDP-CSR. It is protected from public disclosure in accordance with Section 304 of the National Historic Preservation Act, 54 U.S.C. 307103, and 36 CFR 800.11 (c).

Figure 5. The Southern Portion of the Inland Federal Channel with Archaeological Sites 16LF82, 16LF84, 16LF85, and 16LF86 identified.

FOUO Statement: CONFIDENTIAL DO NOT DISCLOSE. This document was prepared by the CEMVN-PDP-CSR. It is protected from public disclosure in accordance with Section 304 of the National Historic Preservation Act, 54 U.S.C. 307103, and 36 CFR 800.11 (c).

Figure 6. The Belle Pass Terminus and Channel Jetties with Archaeological Shipwreck Site 16LF7 indicated within the Project APE. The Proposed Dredge Disposal Sites are Outlined in Yellow.

FOUO Statement: CONFIDENTIAL DO NOT DISCLOSE. This document was prepared by the CEMVN-PDP-CSR. It is protected from public disclosure in accordance with Section 304 of the National Historic Preservation Act, 54 U.S.C. 307103, and 36 CFR 800.11 (c).

Figure 7. Proposed Dredge Disposal Areas with Previous Cultural Resources Surveys overlaid on the Belle Pass, LA 7.5" US Topographic Map (1998). The Proposed Dredge Disposal Sites are Outlined in Yellow.

From: [Ostahowski, Brian E CTV USARMY CEMVN \(USA\)](#)
To: kim@chitimacha.gov
Cc: [Theresa Patingo](#)
Subject: CEMVN Port Fourchon Belle Pass Channel Deepening S106 Consultation - No Historic Properties Affected - Chitimacha
Date: Monday, December 4, 2023 10:57:00 AM
Attachments: [CEMVN Port Fourchon Channel Deepening S106 No Historic Properties Chitimacha.pdf](#)

Good Morning, Tribal Partner,

Attached please find a signed consultation letter:

RE: Section 106 Review Consultation

Undertaking: Port Fourchon Belle Pass Channel Deepening Maintenance and Dredge Material Disposal, Lafourche Parish, Louisiana (Lat. 29.085480° Long. -90.226143°)

Determination: No Historic Properties Affected

Should you have any questions or need additional information about this Undertaking, please contact me at (504) 862-2188 or brian.e.ostahowski@usace.army.mil; or Jason A. Emery, Chief of Cultural & Social Resources, (504) 862-2364 or jason.a.emery@usace.army.mil.

Thank you very much.

V/r,

Brian

Brian E. Ostahowski, MA, RPA
Archaeologist and District Tribal Liaison
U.S. Army Corps of Engineers, New Orleans District
Regional Planning and Environment Division, South
Office: 504-862-2188
Mobile: 504-884-5005
Brian.E.Ostahowski@usace.army.mil



DEPARTMENT OF THE ARMY
CORPS OF ENGINEERS, NEW ORLEANS DISTRICT
7400 LEAKE AVE
NEW ORLEANS LA 70118-3651

December 4, 2023

Regional Planning and
Environment Division, South
Environmental Planning Branch
Attn: CEMVN-PDS-N

Melissa Darden, Chairman
Chitimacha Tribe of Louisiana
P.O. Box 661
Charenton, LA 70523

RE: Section 106 Review Consultation

Undertaking: Port Fourchon Belle Pass Channel Deepening Maintenance and
Dredge Material Disposal, Lafourche Parish, Louisiana (Lat.
29.085480° Long. -90.226143°)

Determination: **No Historic Properties Affected**

Dear Chairman Darden:

The U.S. Army Corps of Engineers, New Orleans District (CEMVN), is preparing an Environmental Assessment (EA) to evaluate a proposed dredging maintenance and material disposal project to deepen the Belle Pass federal channel located south of Port Fourchon in Lafourche Parish, Louisiana. Recently, the National Oceanic and Atmospheric Administration (NOAA), in conjunction with the Greater Lafourche Port Commission (GLPC), completed a Supplemental EA to deepen the Belle Pass federal channel and four boat slips within the Port Fourchon shipyard (NOAA 2023). CEMVN's proposed project will further deepen the same portion of the federal channel and include a long-term dredging-maintenance operations plan for the channel after the NOAA project is completed. The GLPC is also the Non-Federal Sponsor of CEMVN's project, which is authorized by Section 203 of the Water Resources and Development Act (WRDA) of 1986 (PL 998-662), as modified by Section 1014 of Water Resources and Reform Development Act (WRRDA) 2014.

CEMVN, in partial fulfillment of responsibilities under Executive Order 13175, the National Environmental Policy Act, and Section 106 of the National Historic Preservation Act, previously initiated the consultation process for the Belle Pass federal channel deepening and dredge disposal project in 2019. As part of that initial consultation, CEMVN submitted a Draft Environmental Impact Study (DEIS) prepared by the GLPC and a cultural resources assessment and remote sensing survey prepared by Coastal Environments, Inc. (Godzinski et al. 2018). Since that time, however, the scope and scale of CEMVN's project have been significantly reduced as a result of the NOAA project.

-2-

As part of CEMVN's evaluation and in partial fulfillment of responsibilities under the National Environmental Policy Act and Section 106 of the National Historic Preservation Act, CEMVN offers you the opportunity to review and comment on the potential of the proposed action described in this letter to affect historic properties. Additionally, in accordance with the responsibilities of Executive Order 13175, CEMVN offers Federally-recognized Tribes the opportunity to review and comment on the potential of the proposed undertaking described in this letter to significantly affect protected tribal resources, tribal rights, or tribal lands.

Description of the Undertaking

The Undertaking is located south of Port Fourchon within the Belle Pass federal channel (Figure 1). NOAA's Supplemental EA elevates the deepening of the federal channel to 300 feet wide to an elevation of (-) 24 feet Mean Low Gulf (MLG) on the inland reach for mile 3.4 to Mile 0.0, and to an elevation of (-) 26 feet MLG for the offshore reach from Mile 0.0 to Mile (-) 1.3. CEMVN's Undertaking will follow the same channel alignment but will deepen an additional 4 feet to an elevation of (-) 30.0 feet MLG continuing offshore to Mile 1.3, and will disposal the dredged material at two (2) sites located on the left and right of the existing channel jetties approximately 200 feet offshore. Dredging operations will utilize a hydraulic cutter-head dredge and will transport material to the disposal sites in a slurry via floating pipelines. The discharge locations are placed approximately 200 feet offshore within the shallow open waters to allow water and sediment flow for beach nourishment. Construction access for the dredge operations, attendant plant, and discharge line will be located within the open water.

Area of Potential Effects (APE)

The APE for direct and indirect effects is represented in Figure 2. The APE consists of the footprint of the Belle Pass federal channel and the two dredge disposal shoreline locations along Fourchon Beach. The channel dredging operations extend approximately 4.7 miles long. The eastern disposal location measures 3266 feet long by 217 feet wide (16.3 acres) and the western disposal location measures 3,020 feet long by 185 ft wide (12.8 acres) for 29.1 acres combined.

Identification and Evaluation of Historic Properties

A background and literature review utilizing the National Register of Historic Places (NRHP) database and the Louisiana Division of Archaeology (LDOA) *Louisiana Cultural Resources Map* (LDOA Website) identified that the project APE has undergone several cultural resources investigations (Figure 3). Newman (1976) conducted an initial reconnaissance-level cultural resources investigation of the northern portion of Belle Pass, and the entire federal channel underwent a marine remote sensing survey and desktop review conducted for CEMVN's initial Section 106 consultation (Godzinski et al. 2018). Within Belle Pass, archaeological sites 16LF7, 16LF72, 16LF83, and 16LF84 overlap with Project APE and are determined ineligible for listing in the National Register of Historic Places (Figures 4, 5, 6). Archaeological sites 16LF85, 16LF86, and

-3-

16LF249 have an undetermined NRHP eligibility status, but will be avoided by dredging operations (Figure 4 and 5).

Historical aerial images and topographic maps document the dredge disposal areas experienced significant shoreline erosion and disturbance within the last 50 years. The eastern disposal area underwent two terrestrial reconnaissance cultural resources surveys (Gagliano et al. 1976; Beavers and Lamb 1979) and two terrestrial Phase I cultural resources investigations (Braud et al. 2008; Coughlin 2012) when it was a part of the Fourchon Beach shoreline. No cultural resources were identified during these surveys (Figure 7). The initial Belle Pass channel dredging operations previously utilized the proposed western disposal area as a disposal site when it was located along Fourchon Beach before erosion retreated the shoreline to its current location (Figure 2). In addition, a submerged pipeline impacted the western portion of this disposal area (Figure 7). Considered together, previous disturbances and severe erosion have eliminated the potential for the dredge disposal areas to yield intact archaeological deposits. Last, CEMVN reviewed NOAA's Coast Survey's Automated Wreck and Obstruction Information System (AWOIS) database, which did not identify any submerged resources within the proposed disposal areas.

Assessment of Effects

Based on a background and literature review, CEMVN has determined that there are no historic properties, as defined in 36 CFR 800.16 (l) in the APE. Therefore, CEMVN is making a finding of **No Historic Properties Affected** for this undertaking and submitting it to you for review and comment. This project will be subject to the standard change in scope of work, unexpected discovery, and unmarked human burial sites act provisions. CEMVN requests your comments within 30 days, per 36 CFR 800.5(c)

We look forward to your concurrence with this determination. Should you have any questions or need additional information with this undertaking, please contact either Brian Ostahowski, Archaeologist and Tribal Liaison at (504) 862-2188 or brian.e.ostahowski@usace.army.mil; or Jason A. Emery, Chief of Cultural & Social Resources, (504) 862-2364 or jason.a.emery@usace.army.mil.

Sincerely,

WILLIAMS.ERIC
C.MITCHELL 1
065454323

Digitally signed by
WILLIAMS.ERIC.MITCHELL
ELL1065454323
Date: 2023.12.04
09:36:20 -06'00'

ERIC M. WILLIAMS
Chief, Environmental Planning Branch

CC: An electronic copy of this letter with enclosures will be provided to Mrs. Kimberly Walden, M. Ed., Cultural Director/Tribal Historic Preservation Officer, Chitimacha Tribe of Louisiana, kim@chitimacha.gov and Ms. Theresa Patingo at theresap@chitimacha.gov.



1. LA SHPO
2. Chitimacha Tribe of Louisiana
3. Coushatta Tribe of Louisiana
4. Jena Band of Choctaw Indians
5. Mississippi Band of Choctaw Indians
6. Tunica-Biloxi Tribe of Louisiana

References:

Beavers, Richard and Teresia Lamb

1979 *A Level I Cultural Resources Survey and Assessment of Fourchon Island, Lafourche Parish, Louisiana*. Report prepared by the University of New Orleans for the Edward Wisner Donation Advisory Committee (LA DOA Report No. 22-0645).

Braud, Melissa R. with contributions by: Richard A. Weinstein, Paul V. Heinrich, William D. Reeves, Donald Davis, George J. Castille III and Joanne Ryan

2008 *Cultural Resources Survey of the Caminada Headland Restoration Feasibility Study, Lafourche and Jefferson Parishes, Louisiana*. Report prepared by Coastal Environments, Inc. for T. Baker Smith, Inc. (LA DOA Report No. 22-2966).

Coughlin, Sean

2012 *Negative Findings Report Related to the Phase I Cultural Resources Investigation of the Caminada Headland Beach Resotation Area in LaFourche Parish, Louisiana*. Report prepared by R. Christopher Goodwin & Associates, Inc. for Coastal Engineering Consultants, Inc. (LA DOA Report No. 22-3966).

Gagliano, Sherwood, M., Richard A. Weinstein, and Eileen K. Burden

1976 *Archaeological Survey of the Port Fourchon Area, Lafourche Parish, Louisiana*. Report prepared by Coastal Environments, Inc. for the Greater Lafourche Port Commission (LA DOA Report No. 22-0002).

Godzinski, Michael, Dyane B. Lee, Elizabeth V. Williams, Donna Greer, and Elena Ricci.

2018 *Cultural Resources Assessment for the Port Fourchon Project and Results of an Initial Remote Sensing Marine Survey, Lafourche Parish, Louisiana*. Report prepared by Coastal Environments, Inc. for GIS Engineering, LLC. (LA DOA Report No. 22-6170).

National Oceanic and Atmospheric Administration

2023 *West Fourchon Marsh Creation & Nourishment Project, Supplemental Environmental Assessment, Fed No. TE-0134, Lafourche Parish, Louisiana, October 2023*.



Figure 1. Project Overview Map. Proposed Federal Channel Dredging Limits are Outlined in Blue and Proposed Dredge Disposal Locations are Outlined in Yellow.

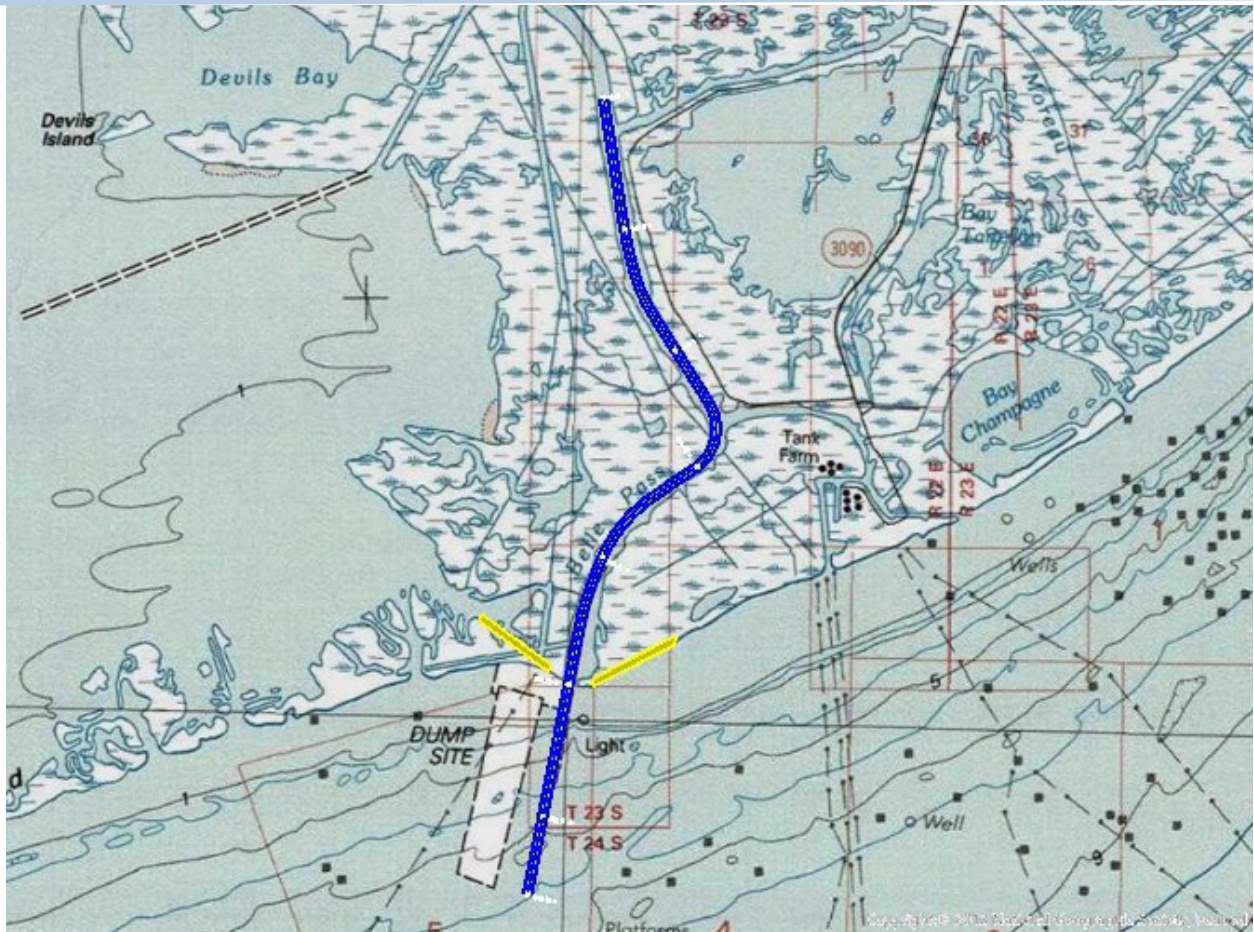


Figure 2. Project Area of Potential Effects (APE) overlaid on the Terrebonne Bay 7.5" US Topographic Map (1983).

FOUO Statement: CONFIDENTIAL DO NOT DISCLOSE. This document was prepared by the CEMVN-PDP-CSR. It is protected from public disclosure in accordance with Section 304 of the National Historic Preservation Act, 54 U.S.C. 307103, and 36 CFR 800.11 (c).

Figure 3. Project APE with Previous Cultural Resources Survey and Previously Identified Archaeological Sites/Shipwrecks Identified.

FOUO Statement: CONFIDENTIAL DO NOT DISCLOSE. This document was prepared by the CEMVN-PDP-CSR. It is protected from public disclosure in accordance with Section 304 of the National Historic Preservation Act, 54 U.S.C. 307103, and 36 CFR 800.11 (c).

Figure 4. The Northern Portion of the Inland Federal Channel with Archaeological Sites 16LF83 and 16LF249 Identified.

FOUO Statement: CONFIDENTIAL DO NOT DISCLOSE. This document was prepared by the CEMVN-PDP-CSR. It is protected from public disclosure in accordance with Section 304 of the National Historic Preservation Act, 54 U.S.C. 307103, and 36 CFR 800.11 (c).

Figure 5. The Southern Portion of the Inland Federal Channel with Archaeological Sites 16LF82, 16LF84, 16LF85, and 16LF86 identified.

FOUO Statement: CONFIDENTIAL DO NOT DISCLOSE. This document was prepared by the CEMVN-PDP-CSR. It is protected from public disclosure in accordance with Section 304 of the National Historic Preservation Act, 54 U.S.C. 307103, and 36 CFR 800.11 (c).

Figure 6. The Belle Pass Terminus and Channel Jetties with Archaeological Shipwreck Site 16LF7 indicated within the Project APE. The Proposed Dredge Disposal Sites are Outlined in Yellow.

FOUO Statement: CONFIDENTIAL DO NOT DISCLOSE. This document was prepared by the CEMVN-PDP-CSR. It is protected from public disclosure in accordance with Section 304 of the National Historic Preservation Act, 54 U.S.C. 307103, and 36 CFR 800.11 (c).

Figure 7. Proposed Dredge Disposal Areas with Previous Cultural Resources Surveys overlaid on the Belle Pass, LA 7.5" US Topographic Map (1998). The Proposed Dredge Disposal Sites are Outlined in Yellow.

From: [Ostahowski, Brian E CIV USARMY CEMVN \(USA\)](#)
To: DakotaJohn@coushatta.org
Cc: kdawsey@coushatta.org
Subject: CEMVN Port Fourchon Belle Pass Channel Deepening S106 Consultation - No Historic Properties Affected - Coushatta
Date: Monday, December 4, 2023 11:00:00 AM
Attachments: [CEMVN Port Fourchon Channel Deepening S106 No Historic Properties Coushatta.pdf](#)

Good Morning, Tribal Partner,

Attached please find a signed consultation letter:

RE: Section 106 Review Consultation
Undertaking: Port Fourchon Belle Pass Channel Deepening Maintenance and Dredge Material Disposal, Lafourche Parish, Louisiana (Lat. 29.085480° Long. -90.226143°)
Determination: No Historic Properties Affected

Should you have any questions or need additional information about this Undertaking, please contact me at (504) 862-2188 or brian.e.ostahowski@usace.army.mil; or Jason A. Emery, Chief of Cultural & Social Resources, (504) 862-2364 or jason.a.emery@usace.army.mil.

Thank you very much.

V/r,

Brian

Brian E. Ostahowski, MA, RPA
Archaeologist and District Tribal Liaison
U.S. Army Corps of Engineers, New Orleans District
Regional Planning and Environment Division, South
Office: 504-862-2188
Mobile: 504-884-5005
Brian.E.Ostahowski@usace.army.mil



DEPARTMENT OF THE ARMY
CORPS OF ENGINEERS, NEW ORLEANS DISTRICT
7400 LEAKE AVE
NEW ORLEANS LA 70118-3651

December 4, 2023

Regional Planning and
Environment Division, South
Environmental Planning Branch
Attn: CEMVN-PDS-N

Jonathan Cernek, Chairman
Coushatta Tribe of Louisiana
P.O. Box 818
Elton, LA 70532

RE: Section 106 Review Consultation

Undertaking: Port Fourchon Belle Pass Channel Deepening Maintenance and
Dredge Material Disposal, Lafourche Parish, Louisiana (Lat.
29.085480° Long. -90.226143°)

Determination: **No Historic Properties Affected**

Dear Chairman Cernek:

The U.S. Army Corps of Engineers, New Orleans District (CEMVN), is preparing an Environmental Assessment (EA) to evaluate a proposed dredging maintenance and material disposal project to deepen the Belle Pass federal channel located south of Port Fourchon in Lafourche Parish, Louisiana. Recently, the National Oceanic and Atmospheric Administration (NOAA), in conjunction with the Greater Lafourche Port Commission (GLPC), completed a Supplemental EA to deepen the Belle Pass federal channel and four boat slips within the Port Fourchon shipyard (NOAA 2023). CEMVN's proposed project will further deepen the same portion of the federal channel and include a long-term dredging-maintenance operations plan for the channel after the NOAA project is completed. The GLPC is also the Non-Federal Sponsor of CEMVN's project, which is authorized by Section 203 of the Water Resources and Development Act (WRDA) of 1986 (PL 998-662), as modified by Section 1014 of Water Resources and Reform Development Act (WRRDA) 2014.

CEMVN, in partial fulfillment of responsibilities under Executive Order 13175, the National Environmental Policy Act, and Section 106 of the National Historic Preservation Act, previously initiated the consultation process for the Belle Pass federal channel deepening and dredge disposal project in 2019. As part of that initial consultation, CEMVN submitted a Draft Environmental Impact Study (DEIS) prepared by the GLPC and a cultural resources assessment and remote sensing survey prepared by Coastal Environments, Inc. (Godzinski et al. 2018). Since that time, however, the scope and scale of CEMVN's project have been significantly reduced as a result of the NOAA project.

-2-

As part of CEMVN's evaluation and in partial fulfillment of responsibilities under the National Environmental Policy Act and Section 106 of the National Historic Preservation Act, CEMVN offers you the opportunity to review and comment on the potential of the proposed action described in this letter to affect historic properties. Additionally, in accordance with the responsibilities of Executive Order 13175, CEMVN offers Federally-recognized Tribes the opportunity to review and comment on the potential of the proposed undertaking described in this letter to significantly affect protected tribal resources, tribal rights, or tribal lands.

Description of the Undertaking

The Undertaking is located south of Port Fourchon within the Belle Pass federal channel (**Figure 1**). NOAA's Supplemental EA elevates the deepening of the federal channel to 300 feet wide to an elevation of (-) 24 feet Mean Low Gulf (MLG) on the inland reach for mile 3.4 to Mile 0.0, and to an elevation of (-) 26 feet MLG for the offshore reach from Mile 0.0 to Mile (-) 1.3. CEMVN's Undertaking will follow the same channel alignment but will deepen an additional 4 feet to an elevation of (-) 30.0 feet MLG continuing offshore to Mile 1.3, and will disposal the dredged material at two (2) sites located on the left and right of the existing channel jetties approximately 200 feet offshore. Dredging operations will utilize a hydraulic cutter-head dredge and will transport material to the disposal sites in a slurry via floating pipelines. The discharge locations are placed approximately 200 feet offshore within the shallow open waters to allow water and sediment flow for beach nourishment. Construction access for the dredge operations, attendant plant, and discharge line will be located within the open water.

Area of Potential Effects (APE)

The APE for direct and indirect effects is represented in **Figure 2**. The APE consists of the footprint of the Belle Pass federal channel and the two dredge disposal shoreline locations along Fourchon Beach. The channel dredging operations extend approximately 4.7 miles long. The eastern disposal location measures 3266 feet long by 217 feet wide (16.3 acres) and the western disposal location measures 3,020 feet long by 185 ft wide (12.8 acres) for 29.1 acres combined.

Identification and Evaluation of Historic Properties

A background and literature review utilizing the National Register of Historic Places (NRHP) database and the Louisiana Division of Archaeology (LDOA) *Louisiana Cultural Resources Map* (LDOA Website) identified that the project APE has undergone several cultural resources investigations (**Figure 3**). Newman (1976) conducted an initial reconnaissance-level cultural resources investigation of the northern portion of Belle Pass, and the entire federal channel underwent a marine remote sensing survey and desktop review conducted for CEMVN's initial Section 106 consultation (Godzinski et al. 2018). Within Belle Pass, archaeological sites 16LF7, 16LF72, 16LF83, and 16LF84 overlap with Project APE and are determined ineligible for listing in the National Register of Historic Places (**Figures 4, 5, 6**). Archaeological sites 16LF85, 16LF86, and

16LF249 have an undetermined NRHP eligibility status, but will be avoided by dredging operations (Figure 4 and 5).

Historical aerial images and topographic maps document the dredge disposal areas experienced significant shoreline erosion and disturbance within the last 50 years. The eastern disposal area underwent two terrestrial reconnaissance cultural resources surveys (Gagliano et al. 1976; Beavers and Lamb 1979) and two terrestrial Phase I cultural resources investigations (Braud et al. 2008; Coughlin 2012) when it was a part of the Fourchon Beach shoreline. No cultural resources were identified during these surveys (Figure 7). The initial Belle Pass channel dredging operations previously utilized the proposed western disposal area as a disposal site when it was located along Fourchon Beach before erosion retreated the shoreline to its current location (Figure 2). In addition, a submerged pipeline impacted the western portion of this disposal area (Figure 7). Considered together, previous disturbances and severe erosion have eliminated the potential for the dredge disposal areas to yield intact archaeological deposits. Last, CEMVN reviewed NOAA's Coast Survey's Automated Wreck and Obstruction Information System (AWOIS) database, which did not identify any submerged resources within the proposed disposal areas.

Assessment of Effects

Based on a background and literature review, CEMVN has determined that there are no historic properties, as defined in 36 CFR 800.16 (l) in the APE. Therefore, CEMVN is making a finding of **No Historic Properties Affected** for this undertaking and submitting it to you for review and comment. This project will be subject to the standard change in scope of work, unexpected discovery, and unmarked human burial sites act provisions. CEMVN requests your comments within 30 days, per 36 CFR 800.5(c)

We look forward to your concurrence with this determination. Should you have any questions or need additional information with this undertaking, please contact either Brian Ostahowski, Archaeologist and Tribal Liaison at (504) 862-2188 or brian.e.ostahowski@usace.army.mil; or Jason A. Emery, Chief of Cultural & Social Resources, (504) 862-2364 or jason.a.emery@usace.army.mil.

Sincerely,

WILLIAMS.ERI
C.MITCHELL.1
065454323

Digitally signed by
WILLIAMS.ERIC.MITCH
ELL.1065454323
Date: 2023.12.04
09:35:42 -06'00'

ERIC M. WILLIAMS

Chief, Environmental Planning Branch

CC: An electronic copy of this letter with enclosures will be provided to Mr. Dakota John, Tribal Historic Preservation Officer, Coushatta Tribe of Louisiana, dakotajohn@coushatta.org and Ms. Kassie Dawsey, Section 106 Coordinator, kdawsey@coushatta.org.



1. LA SHPO
2. Chitimacha Tribe of Louisiana
3. Coushatta Tribe of Louisiana
4. Jena Band of Choctaw Indians
5. Mississippi Band of Choctaw Indians
6. Tunica-Biloxi Tribe of Louisiana

References:

Beavers, Richard and Teresia Lamb

1979 *A Level I Cultural Resources Survey and Assessment of Fourchon Island, Lafourche Parish, Louisiana*. Report prepared by the University of New Orleans for the Edward Wisner Donation Advisory Committee (LA DOA Report No. 22-0645).

Braud, Melissa R. with contributions by: Richard A. Weinstein, Paul V. Heinrich, William D. Reeves, Donald Davis, George J. Castille III and Joanne Ryan

2008 *Cultural Resources Survey of the Caminada Headland Restoration Feasibility Study, Lafourche and Jefferson Parishes, Louisiana*. Report prepared by Coastal Environments, Inc. for T. Baker Smith, Inc. (LA DOA Report No. 22-2966).

Coughlin, Sean

2012 *Negative Findings Report Related to the Phase I Cultural Resources Investigation of the Caminada Headland Beach Resotation Area in LaFourche Parish, Louisiana*. Report prepared by R. Christopher Goodwin & Associates, Inc. for Coastal Engineering Consultants, Inc. (LA DOA Report No. 22-3966).

Gagliano, Sherwood, M., Richard A. Weinstein, and Eileen K. Burden

1976 *Archaeological Survey of the Port Fourchon Area, Lafourche Parish, Louisiana*. Report prepared by Coastal Environments, Inc. for the Greater Lafourche Port Commission (LA DOA Report No. 22-0002).

Godzinski, Michael, Dyane B. Lee, Elizabeth V. Williams, Donna Greer, and Elena Ricci.

2018 *Cultural Resources Assessment for the Port Fourchon Project and Results of an Initial Remote Sensing Marine Survey, Lafourche Parish, Louisiana*. Report prepared by Coastal Environments, Inc. for GIS Engineering, LLC. (LA DOA Report No. 22-6170).

National Oceanic and Atmospheric Administration

2023 *West Fourchon Marsh Creation & Nourishment Project, Supplemental Environmental Assessment, Fed No. TE-0134, Lafourche Parish, Louisiana, October 2023*.



Figure 1. Project Overview Map. Proposed Federal Channel Dredging Limits are Outlined in Blue and Proposed Dredge Disposal Locations are Outlined in Yellow.

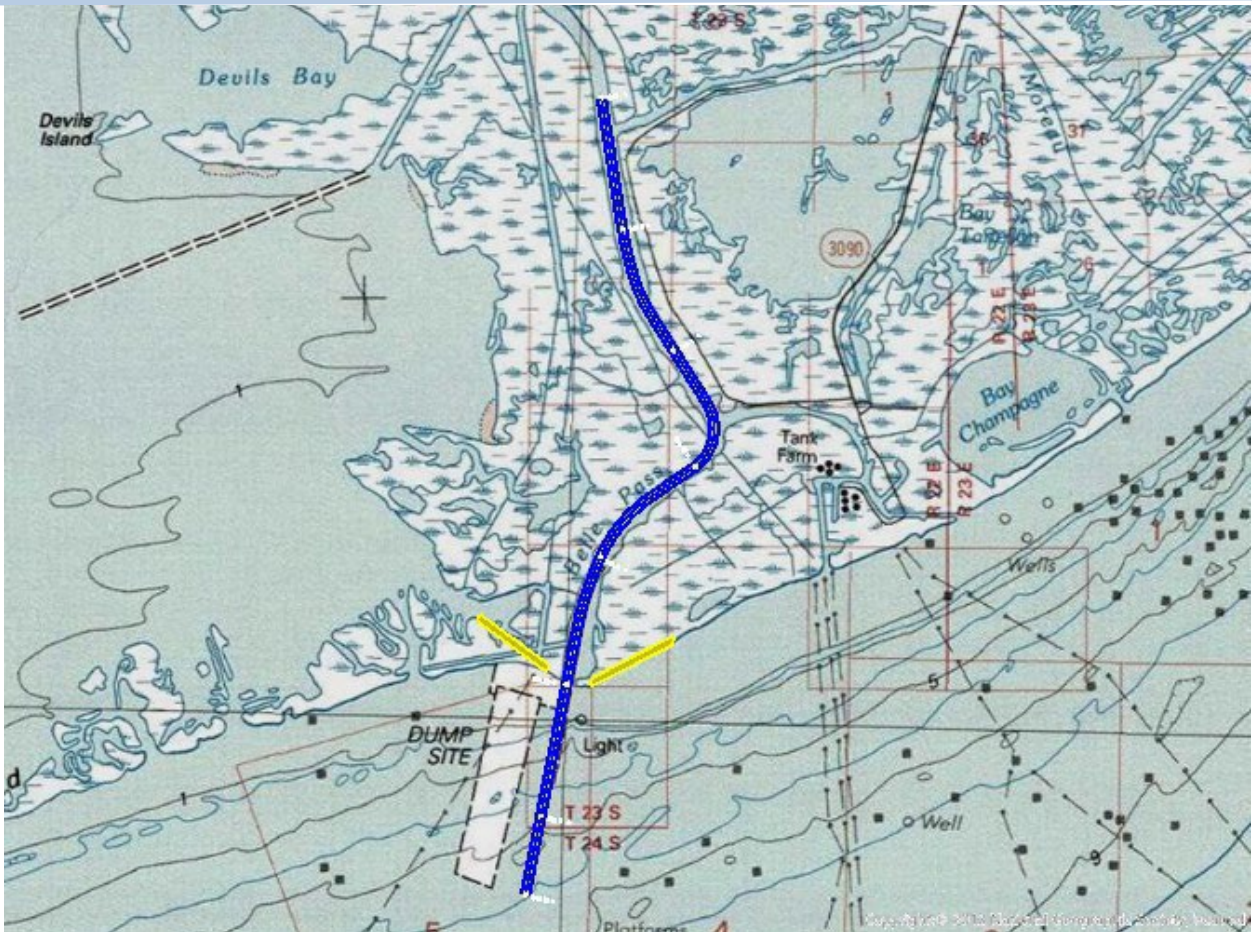


Figure 2. Project Area of Potential Effects (APE) overlaid on the Terrebonne Bay 7.5" US Topographic Map (1983).

FOUO Statement: CONFIDENTIAL DO NOT DISCLOSE. This document was prepared by the CEMVN-PDP-CSR. It is protected from public disclosure in accordance with Section 304 of the National Historic Preservation Act, 54 U.S.C. 307103, and 36 CFR 800.11 (c).

Figure 3. Project APE with Previous Cultural Resources Survey and Previously Identified Archaeological Sites/Shipwrecks Identified.

FOUO Statement: CONFIDENTIAL DO NOT DISCLOSE. This document was prepared by the CEMVN-PDP-CSR. It is protected from public disclosure in accordance with Section 304 of the National Historic Preservation Act, 54 U.S.C. 307103, and 36 CFR 800.11 (c).

Figure 4. The Northern Portion of the Inland Federal Channel with Archaeological Sites 16LF83 and 16LF249 Identified.

FOUO Statement: CONFIDENTIAL DO NOT DISCLOSE. This document was prepared by the CEMVN-PDP-CSR. It is protected from public disclosure in accordance with Section 304 of the National Historic Preservation Act, 54 U.S.C. 307103, and 36 CFR 800.11 (c).

Figure 5. The Southern Portion of the Inland Federal Channel with Archaeological Sites 16LF82, 16LF84, 16LF85, and 16LF86 identified.

FOUO Statement: CONFIDENTIAL DO NOT DISCLOSE. This document was prepared by the CEMVN-PDP-CSR. It is protected from public disclosure in accordance with Section 304 of the National Historic Preservation Act, 54 U.S.C. 307103, and 36 CFR 800.11 (c).

Figure 6. The Belle Pass Terminus and Channel Jetties with Archaeological Shipwreck Site 16LF7 indicated within the Project APE. The Proposed Dredge Disposal Sites are Outlined in Yellow.

FOUO Statement: CONFIDENTIAL DO NOT DISCLOSE. This document was prepared by the CEMVN-PDP-CSR. It is protected from public disclosure in accordance with Section 304 of the National Historic Preservation Act, 54 U.S.C. 307103, and 36 CFR 800.11 (c).

Figure 7. Proposed Dredge Disposal Areas with Previous Cultural Resources Surveys overlaid on the Belle Pass, LA 7.5" US Topographic Map (1998). The Proposed Dredge Disposal Sites are Outlined in Yellow.

From: [Ostahowski, Brian E.CIV.USARMY.CEMVN \(USA\)](mailto:Ostahowski.Brian.E.CIV.USARMY.CEMVN@USA)
To: jflynn@jenachoctaw.org
Subject: CEMVN Port Fourchon Belle Pass Channel Deepening S106 Consultation - No Historic Properties Affected - JBCI
Date: Monday, December 4, 2023 11:01:00 AM
Attachments: [CEMVN Port Fourchon Channel Deepening S106 No Historic Properties JBCI.pdf](#)

Good Morning, Tribal Partner,

Attached please find a signed consultation letter:

RE: Section 106 Review Consultation
Undertaking: Port Fourchon Belle Pass Channel Deepening Maintenance and
Dredge Material Disposal, Lafourche Parish, Louisiana (Lat. 29.085480° Long.
-90.226143°)
Determination: No Historic Properties Affected

Should you have any questions or need additional information about this Undertaking, please contact me at (504) 862-2188 or brian.e.ostahowski@usace.army.mil; or Jason A. Emery, Chief of Cultural & Social Resources, (504) 862-2364 or jason.a.emery@usace.army.mil.

Thank you very much.

V/r,

Brian

Brian E. Ostahowski, MA, RPA
Archaeologist and District Tribal Liaison
U.S. Army Corps of Engineers, New Orleans District
Regional Planning and Environment Division, South
Office: 504-862-2188
Mobile: 504-884-5005
Brian.E.Ostahowski@usace.army.mil



DEPARTMENT OF THE ARMY
CORPS OF ENGINEERS, NEW ORLEANS DISTRICT
7400 LEAKE AVE
NEW ORLEANS LA 70118-3651

December 4, 2023

Regional Planning and
Environment Division, South
Environmental Planning Branch
Attn: CEMVN-PDS-N

Libby Rogers, Principal Chief
Jena Band of Choctaw Indians
P.O. Box 14
Jena, LA 71342

RE: Section 106 Review Consultation

Undertaking: Port Fourchon Belle Pass Channel Deepening Maintenance and
Dredge Material Disposal, Lafourche Parish, Louisiana (Lat.
29.085480° Long. -90.226143°)

Determination: No Historic Properties Affected

Dear Principal Chief Rogers:

The U.S. Army Corps of Engineers, New Orleans District (CEMVN), is preparing an Environmental Assessment (EA) to evaluate a proposed dredging maintenance and material disposal project to deepen the Belle Pass federal channel located south of Port Fourchon in Lafourche Parish, Louisiana. Recently, the National Oceanic and Atmospheric Administration (NOAA), in conjunction with the Greater Lafourche Port Commission (GLPC), completed a Supplemental EA to deepen the Belle Pass federal channel and four boat slips within the Port Fourchon shipyard (NOAA 2023). CEMVN's proposed project will further deepen the same portion of the federal channel and include a long-term dredging-maintenance operations plan for the channel after the NOAA project is completed. The GLPC is also the Non-Federal Sponsor of CEMVN's project, which is authorized by Section 203 of the Water Resources and Development Act (WRDA) of 1986 (PL 998-662), as modified by Section 1014 of Water Resources and Reform Development Act (WRRDA) 2014.

CEMVN, in partial fulfillment of responsibilities under Executive Order 13175, the National Environmental Policy Act, and Section 106 of the National Historic Preservation Act, previously initiated the consultation process for the Belle Pass federal channel deepening and dredge disposal project in 2019. As part of that initial consultation, CEMVN submitted a Draft Environmental Impact Study (DEIS) prepared by the GLPC and a cultural resources assessment and remote sensing survey prepared by Coastal Environments, Inc. (Godzinski et al. 2018). Since that time, however, the scope and scale of CEMVN's project have been significantly reduced as a result of the NOAA project.

-2-

As part of CEMVN's evaluation and in partial fulfillment of responsibilities under the National Environmental Policy Act and Section 106 of the National Historic Preservation Act, CEMVN offers you the opportunity to review and comment on the potential of the proposed action described in this letter to affect historic properties. Additionally, in accordance with the responsibilities of Executive Order 13175, CEMVN offers Federally-recognized Tribes the opportunity to review and comment on the potential of the proposed undertaking described in this letter to significantly affect protected tribal resources, tribal rights, or tribal lands.

Description of the Undertaking

The Undertaking is located south of Port Fourchon within the Belle Pass federal channel (Figure 1). NOAA's Supplemental EA elevates the deepening of the federal channel to 300 feet wide to an elevation of (-) 24 feet Mean Low Gulf (MLG) on the inland reach for mile 3.4 to Mile 0.0, and to an elevation of (-) 26 feet MLG for the offshore reach from Mile 0.0 to Mile (-) 1.3. CEMVN's Undertaking will follow the same channel alignment but will deepen an additional 4 feet to an elevation of (-) 30.0 feet MLG continuing offshore to Mile 1.3, and will disposal the dredged material at two (2) sites located on the left and right of the existing channel jetties approximately 200 feet offshore. Dredging operations will utilize a hydraulic cutter-head dredge and will transport material to the disposal sites in a slurry via floating pipelines. The discharge locations are placed approximately 200 feet offshore within the shallow open waters to allow water and sediment flow for beach nourishment. Construction access for the dredge operations, attendant plant, and discharge line will be located within the open water.

Area of Potential Effects (APE)

The APE for direct and indirect effects is represented in Figure 2. The APE consists of the footprint of the Belle Pass federal channel and the two dredge disposal shoreline locations along Fourchon Beach. The channel dredging operations extend approximately 4.7 miles long. The eastern disposal location measures 3266 feet long by 217 feet wide (16.3 acres) and the western disposal location measures 3,020 feet long by 185 ft wide (12.8 acres) for 29.1 acres combined.

Identification and Evaluation of Historic Properties

A background and literature review utilizing the National Register of Historic Places (NRHP) database and the Louisiana Division of Archaeology (LDOA) *Louisiana Cultural Resources Map* (LDOA Website) identified that the project APE has undergone several cultural resources investigations (Figure 3). Newman (1976) conducted an initial reconnaissance-level cultural resources investigation of the northern portion of Belle Pass, and the entire federal channel underwent a marine remote sensing survey and desktop review conducted for CEMVN's initial Section 106 consultation (Godzinski et al. 2018). Within Belle Pass, archaeological sites 16LF7, 16LF72, 16LF83, and 16LF84 overlap with Project APE and are determined ineligible for listing in the National Register of Historic Places (Figures 4, 5, 6). Archaeological sites 16LF85, 16LF86, and

-3-

16LF249 have an undetermined NRHP eligibility status, but will be avoided by dredging operations (Figure 4 and 5).

Historical aerial images and topographic maps document the dredge disposal areas experienced significant shoreline erosion and disturbance within the last 50 years. The eastern disposal area underwent two terrestrial reconnaissance cultural resources surveys (Gagliano et al. 1976; Beavers and Lamb 1979) and two terrestrial Phase I cultural resources investigations (Braud et al. 2008; Coughlin 2012) when it was a part of the Fourchon Beach shoreline. No cultural resources were identified during these surveys (Figure 7). The initial Belle Pass channel dredging operations previously utilized the proposed western disposal area as a disposal site when it was located along Fourchon Beach before erosion retreated the shoreline to its current location (Figure 2). In addition, a submerged pipeline impacted the western portion of this disposal area (Figure 7). Considered together, previous disturbances and severe erosion have eliminated the potential for the dredge disposal areas to yield intact archaeological deposits. Last, CEMVN reviewed NOAA's Coast Survey's Automated Wreck and Obstruction Information System (AWOIS) database, which did not identify any submerged resources within the proposed disposal areas.

Assessment of Effects

Based on a background and literature review, CEMVN has determined that there are no historic properties, as defined in 36 CFR 800.16 (l) in the APE. Therefore, CEMVN is making a finding of **No Historic Properties Affected** for this undertaking and submitting it to you for review and comment. This project will be subject to the standard change in scope of work, unexpected discovery, and unmarked human burial sites act provisions. CEMVN requests your comments within 30 days, per 36 CFR 800.5(c)

We look forward to your concurrence with this determination. Should you have any questions or need additional information with this undertaking, please contact either Brian Ostahowski, Archaeologist and Tribal Liaison at (504) 862-2188 or brian.e.ostahowski@usace.army.mil; or Jason A. Emery, Chief of Cultural & Social Resources, (504) 862-2364 or jason.a.emery@usace.army.mil.

Sincerely,

WILLIAMS.ERIC
C.MITCHELL.1
065454323

Digitally signed by
WILLIAMS.ERIC.MITCHELL
ELL.1065454323
Date: 2023.12.04
09:35:09 -06'00'

ERIC M. WILLIAMS
Chief, Environmental Planning Branch

CC: An electronic copy of this letter with enclosures will be provided to Ms. Johnna Flynn, Tribal Historic Preservation Officer, Jena Band of Choctaw Indians, JFlynn@jenachoctaw.org.



1. LA SHPO
2. Chitimacha Tribe of Louisiana
3. Coushatta Tribe of Louisiana
4. Jena Band of Choctaw Indians
5. Mississippi Band of Choctaw Indians
6. Tunica-Biloxi Tribe of Louisiana

References:

Beavers, Richard and Teresia Lamb

1979 *A Level I Cultural Resources Survey and Assessment of Fourchon Island, Lafourche Parish, Louisiana*. Report prepared by the University of New Orleans for the Edward Wisner Donation Advisory Committee (LA DOA Report No. 22-0645).

Braud, Melissa R. with contributions by: Richard A. Weinstein, Paul V. Heinrich, William D. Reeves, Donald Davis, George J. Castille III and Joanne Ryan

2008 *Cultural Resources Survey of the Caminada Headland Restoration Feasibility Study, Lafourche and Jefferson Parishes, Louisiana*. Report prepared by Coastal Environments, Inc. for T. Baker Smith, Inc. (LA DOA Report No. 22-2966).

Coughlin, Sean

2012 *Negative Findings Report Related to the Phase I Cultural Resources Investigation of the Caminada Headland Beach Resotation Area in LaFourche Parish, Louisiana*. Report prepared by R. Christopher Goodwin & Associates, Inc. for Coastal Engineering Consultants, Inc. (LA DOA Report No. 22-3966).

Gagliano, Sherwood, M., Richard A. Weinstein, and Eileen K. Burden

1976 *Archaeological Survey of the Port Fourchon Area, Lafourche Parish, Louisiana*. Report prepared by Coastal Environments, Inc. for the Greater Lafourche Port Commission (LA DOA Report No. 22-0002).

Godzinski, Michael, Dyane B. Lee, Elizabeth V. Williams, Donna Greer, and Elena Ricci.

2018 *Cultural Resources Assessment for the Port Fourchon Project and Results of an Initial Remote Sensing Marine Survey, Lafourche Parish, Louisiana*. Report prepared by Coastal Environments, Inc. for GIS Engineering, LLC. (LA DOA Report No. 22-6170).

National Oceanic and Atmospheric Administration

2023 *West Fourchon Marsh Creation & Nourishment Project, Supplemental Environmental Assessment, Fed No. TE-0134, Lafourche Parish, Louisiana, October 2023*.



Figure 1. Project Overview Map. Proposed Federal Channel Dredging Limits are Outlined in Blue and Proposed Dredge Disposal Locations are Outlined in Yellow.

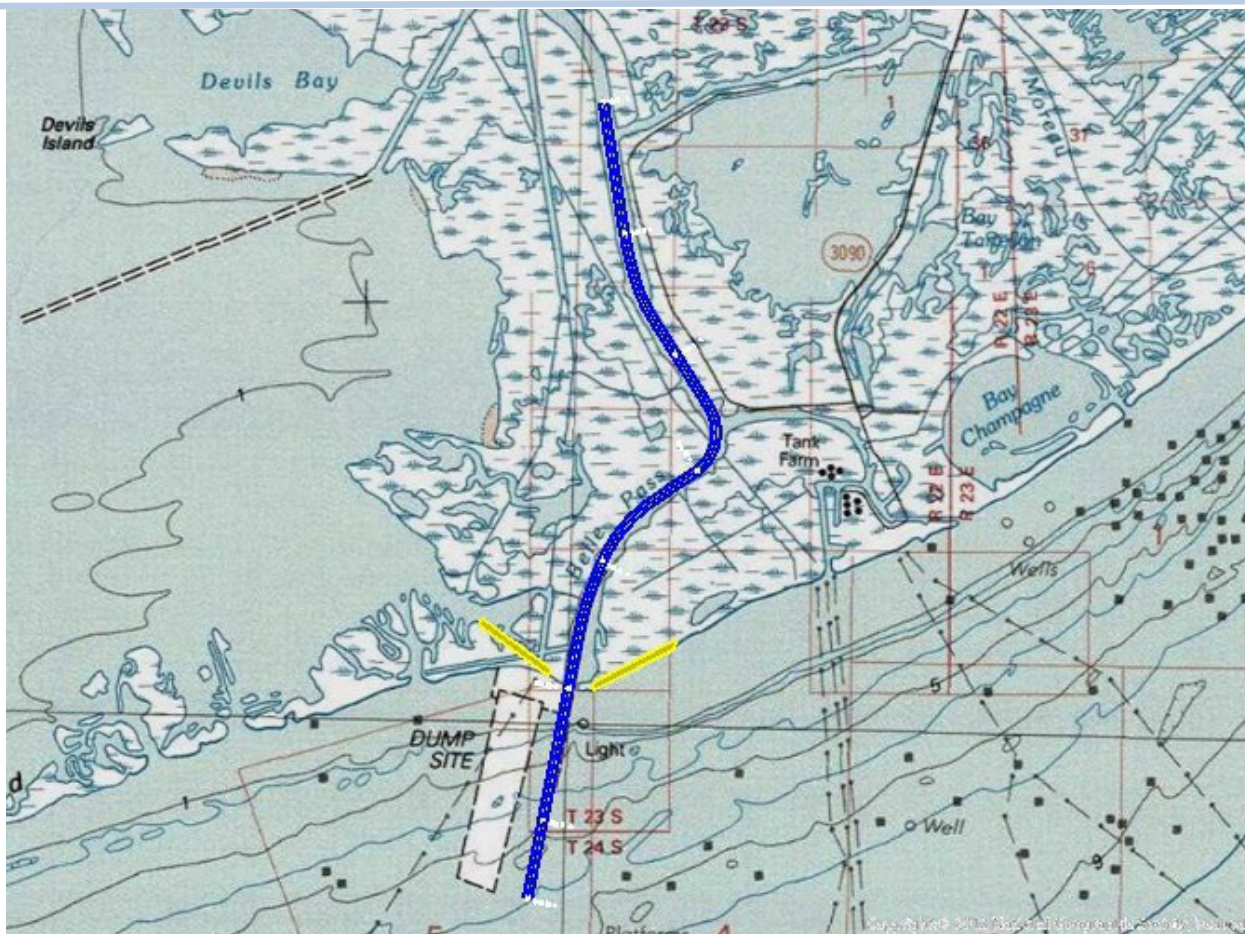


Figure 2. Project Area of Potential Effects (APE) overlaid on the Terrebonne Bay 7.5" US Topographic Map (1983).

FOUO Statement: CONFIDENTIAL DO NOT DISCLOSE. This document was prepared by the CEMVN-PDP-CSR. It is protected from public disclosure in accordance with Section 304 of the National Historic Preservation Act, 54 U.S.C. 307103, and 36 CFR 800.11 (c).

Figure 3. Project APE with Previous Cultural Resources Survey and Previously Identified Archaeological Sites/Shipwrecks Identified.

FOUO Statement: CONFIDENTIAL DO NOT DISCLOSE. This document was prepared by the CEMVN-PDP-CSR. It is protected from public disclosure in accordance with Section 304 of the National Historic Preservation Act, 54 U.S.C. 307103, and 36 CFR 800.11 (c).

Figure 4. The Northern Portion of the Inland Federal Channel with Archaeological Sites 16LF83 and 16LF249 Identified.

FOUO Statement: CONFIDENTIAL DO NOT DISCLOSE. This document was prepared by the CEMVN-PDP-CSR. It is protected from public disclosure in accordance with Section 304 of the National Historic Preservation Act, 54 U.S.C. 307103, and 36 CFR 800.11 (c).

Figure 5. The Southern Portion of the Inland Federal Channel with Archaeological Sites 16LF82, 16LF84, 16LF85, and 16LF86 identified.

FOUO Statement: CONFIDENTIAL DO NOT DISCLOSE. This document was prepared by the CEMVN-PDP-CSR. It is protected from public disclosure in accordance with Section 304 of the National Historic Preservation Act, 54 U.S.C. 307103, and 36 CFR 800.11 (c).

Figure 6. The Belle Pass Terminus and Channel Jetties with Archaeological Shipwreck Site 16LF7 indicated within the Project APE. The Proposed Dredge Disposal Sites are Outlined in Yellow.

FOUO Statement: CONFIDENTIAL DO NOT DISCLOSE. This document was prepared by the CEMVN-PDP-CSR. It is protected from public disclosure in accordance with Section 304 of the National Historic Preservation Act, 54 U.S.C. 307103, and 36 CFR 800.11 (c).

Figure 7. Proposed Dredge Disposal Areas with Previous Cultural Resources Surveys overlaid on the Belle Pass, LA 7.5" US Topographic Map (1998). The Proposed Dredge Disposal Sites are Outlined in Yellow.

From: [Ostahowski, Brian E CIV USARMY CEMVN \(USA\)](#)
To: section106@choctaw.org
Subject: CEMVN Port Fourchon Belle Pass Channel Deepening S106 Consultation - No Historic Properties Affected - MBCI
Date: Monday, December 4, 2023 11:02:00 AM
Attachments: [CEMVN Port Fourchon Channel Deepening S106 No Historic Properties MBCI.pdf](#)

Good Morning, Tribal Partner,

Attached please find a signed consultation letter:

RE: Section 106 Review Consultation

Undertaking: Port Fourchon Belle Pass Channel Deepening Maintenance and Dredge Material Disposal, Lafourche Parish, Louisiana (Lat. 29.085480° Long. -90.226143°)

Determination: No Historic Properties Affected

Should you have any questions or need additional information about this Undertaking, please contact me at (504) 862-2188 or brian.e.ostahowski@usace.army.mil; or Jason A. Emery, Chief of Cultural & Social Resources, (504) 862-2364 or jason.a.emery@usace.army.mil.

Thank you very much.

V/r,

Brian

Brian E. Ostahowski, MA, RPA
Archaeologist and District Tribal Liaison
U.S. Army Corps of Engineers, New Orleans District
Regional Planning and Environment Division, South
Office: 504-862-2188
Mobile: 504-884-5005
Brian.E.Ostahowski@usace.army.mil



DEPARTMENT OF THE ARMY
CORPS OF ENGINEERS, NEW ORLEANS DISTRICT
7400 LEAKE AVE
NEW ORLEANS LA 70118-3651

December 4, 2023

Regional Planning and
Environment Division, South
Environmental Planning Branch
Attn: CEMVN-PDS-N

Cyrus Ben, Chief
Mississippi Band of Choctaw Indians
101 Industrial Road
Choctaw, MS 39350

RE: Section 106 Review Consultation

Undertaking: Port Fourchon Belle Pass Channel Deepening Maintenance and
Dredge Material Disposal, Lafourche Parish, Louisiana (Lat.
29.085480° Long. -90.226143°)

Determination: No Historic Properties Affected

Dear Chief Ben:

The U.S. Army Corps of Engineers, New Orleans District (CEMVN), is preparing an Environmental Assessment (EA) to evaluate a proposed dredging maintenance and material disposal project to deepen the Belle Pass federal channel located south of Port Fourchon in Lafourche Parish, Louisiana. Recently, the National Oceanic and Atmospheric Administration (NOAA), in conjunction with the Greater Lafourche Port Commission (GLPC), completed a Supplemental EA to deepen the Belle Pass federal channel and four boat slips within the Port Fourchon shipyard (NOAA 2023). CEMVN's proposed project will further deepen the same portion of the federal channel and include a long-term dredging-maintenance operations plan for the channel after the NOAA project is completed. The GLPC is also the Non-Federal Sponsor of CEMVN's project, which is authorized by Section 203 of the Water Resources and Development Act (WRDA) of 1986 (PL 998-662), as modified by Section 1014 of Water Resources and Reform Development Act (WRRDA) 2014.

CEMVN, in partial fulfillment of responsibilities under Executive Order 13175, the National Environmental Policy Act, and Section 106 of the National Historic Preservation Act, previously initiated the consultation process for the Belle Pass federal channel deepening and dredge disposal project in 2019. As part of that initial consultation, CEMVN submitted a Draft Environmental Impact Study (DEIS) prepared by the GLPC and a cultural resources assessment and remote sensing survey prepared by Coastal Environments, Inc. (Godzinski et al. 2018). Since that time, however, the scope and scale of CEMVN's project have been significantly reduced as a result of the NOAA project.

-2-

As part of CEMVN's evaluation and in partial fulfillment of responsibilities under the National Environmental Policy Act and Section 106 of the National Historic Preservation Act, CEMVN offers you the opportunity to review and comment on the potential of the proposed action described in this letter to affect historic properties. Additionally, in accordance with the responsibilities of Executive Order 13175, CEMVN offers Federally-recognized Tribes the opportunity to review and comment on the potential of the proposed undertaking described in this letter to significantly affect protected tribal resources, tribal rights, or tribal lands.

Description of the Undertaking

The Undertaking is located south of Port Fourchon within the Belle Pass federal channel (Figure 1). NOAA's Supplemental EA elevates the deepening of the federal channel to 300 feet wide to an elevation of (-) 24 feet Mean Low Gulf (MLG) on the inland reach for mile 3.4 to Mile 0.0, and to an elevation of (-) 26 feet MLG for the offshore reach from Mile 0.0 to Mile (-) 1.3. CEMVN's Undertaking will follow the same channel alignment but will deepen an additional 4 feet to an elevation of (-) 30.0 feet MLG continuing offshore to Mile 1.3, and will disposal the dredged material at two (2) sites located on the left and right of the existing channel jetties approximately 200 feet offshore. Dredging operations will utilize a hydraulic cutter-head dredge and will transport material to the disposal sites in a slurry via floating pipelines. The discharge locations are placed approximately 200 feet offshore within the shallow open waters to allow water and sediment flow for beach nourishment. Construction access for the dredge operations, attendant plant, and discharge line will be located within the open water.

Area of Potential Effects (APE)

The APE for direct and indirect effects is represented in Figure 2. The APE consists of the footprint of the Belle Pass federal channel and the two dredge disposal shoreline locations along Fourchon Beach. The channel dredging operations extend approximately 4.7 miles long. The eastern disposal location measures 3266 feet long by 217 feet wide (16.3 acres) and the western disposal location measures 3,020 feet long by 185 ft wide (12.8 acres) for 29.1 acres combined.

Identification and Evaluation of Historic Properties

A background and literature review utilizing the National Register of Historic Places (NRHP) database and the Louisiana Division of Archaeology (LDOA) *Louisiana Cultural Resources Map* (LDOA Website) identified that the project APE has undergone several cultural resources investigations (Figure 3). Newman (1976) conducted an initial reconnaissance-level cultural resources investigation of the northern portion of Belle Pass, and the entire federal channel underwent a marine remote sensing survey and desktop review conducted for CEMVN's initial Section 106 consultation (Godzinski et al. 2018). Within Belle Pass, archaeological sites 16LF7, 16LF72, 16LF83, and 16LF84 overlap with Project APE and are determined ineligible for listing in the National Register of Historic Places (Figures 4, 5, 6). Archaeological sites 16LF85, 16LF86, and

16LF249 have an undetermined NRHP eligibility status, but will be avoided by dredging operations (Figure 4 and 5).

Historical aerial images and topographic maps document the dredge disposal areas experienced significant shoreline erosion and disturbance within the last 50 years. The eastern disposal area underwent two terrestrial reconnaissance cultural resources surveys (Gagliano et al. 1976; Beavers and Lamb 1979) and two terrestrial Phase I cultural resources investigations (Braud et al. 2008; Coughlin 2012) when it was a part of the Fourchon Beach shoreline. No cultural resources were identified during these surveys (Figure 7). The initial Belle Pass channel dredging operations previously utilized the proposed western disposal area as a disposal site when it was located along Fourchon Beach before erosion retreated the shoreline to its current location (Figure 2). In addition, a submerged pipeline impacted the western portion of this disposal area (Figure 7). Considered together, previous disturbances and severe erosion have eliminated the potential for the dredge disposal areas to yield intact archaeological deposits. Last, CEMVN reviewed NOAA's Coast Survey's Automated Wreck and Obstruction Information System (AWOIS) database, which did not identify any submerged resources within the proposed disposal areas.

Assessment of Effects

Based on a background and literature review, CEMVN has determined that there are no historic properties, as defined in 36 CFR 800.16 (l) in the APE. Therefore, CEMVN is making a finding of **No Historic Properties Affected** for this undertaking and submitting it to you for review and comment. This project will be subject to the standard change in scope of work, unexpected discovery, and unmarked human burial sites act provisions. CEMVN requests your comments within 30 days, per 36 CFR 800.5(c)

We look forward to your concurrence with this determination. Should you have any questions or need additional information with this undertaking, please contact either Brian Ostahowski, Archaeologist and Tribal Liaison at (504) 862-2188 or brian.e.ostahowski@usace.army.mil; or Jason A. Emery, Chief of Cultural & Social Resources, (504) 862-2364 or jason.a.emery@usace.army.mil.

Sincerely,

WILLIAMS.ERI
C.MITCHELL.1
065454323

Digitally signed by
WILLIAMS.ERIC.MITCHELL
L.1065454323
Date: 2023.12.04
09:34:35 -06'00'

ERIC M. WILLIAMS
Chief, Environmental Planning Branch

CC: An electronic copy of this letter with enclosures will be provided to Ms. Melanie Carson, Tribal Historic Preservation Officer, Mississippi Band of Choctaw Indians, Section106@choctaw.org



1. LA SHPO
2. Chitimacha Tribe of Louisiana
3. Coushatta Tribe of Louisiana
4. Jena Band of Choctaw Indians
5. Mississippi Band of Choctaw Indians
6. Tunica-Biloxi Tribe of Louisiana

References:

Beavers, Richard and Teresia Lamb

1979 *A Level I Cultural Resources Survey and Assessment of Fourchon Island, Lafourche Parish, Louisiana*. Report prepared by the University of New Orleans for the Edward Wisner Donation Advisory Committee (LA DOA Report No. 22-0645).

Braud, Melissa R. with contributions by: Richard A. Weinstein, Paul V. Heinrich, William D. Reeves, Donald Davis, George J. Castille III and Joanne Ryan

2008 *Cultural Resources Survey of the Caminada Headland Restoration Feasibility Study, Lafourche and Jefferson Parishes, Louisiana*. Report prepared by Coastal Environments, Inc. for T. Baker Smith, Inc. (LA DOA Report No. 22-2966).

Coughlin, Sean

2012 *Negative Findings Report Related to the Phase I Cultural Resources Investigation of the Caminada Headland Beach Resotation Area in LaFourche Parish, Louisiana*. Report prepared by R. Christopher Goodwin & Associates, Inc. for Coastal Engineering Consultants, Inc. (LA DOA Report No. 22-3966).

Gagliano, Sherwood, M., Richard A. Weinstein, and Eileen K. Burden

1976 *Archaeological Survey of the Port Fourchon Area, Lafourche Parish, Louisiana*. Report prepared by Coastal Environments, Inc. for the Greater Lafourche Port Commission (LA DOA Report No. 22-0002).

Godzinski, Michael, Dyane B. Lee, Elizabeth V. Williams, Donna Greer, and Elena Ricci.

2018 *Cultural Resources Assessment for the Port Fourchon Project and Results of an Initial Remote Sensing Marine Survey, Lafourche Parish, Louisiana*. Report prepared by Coastal Environments, Inc. for GIS Engineering, LLC. (LA DOA Report No. 22-6170).

National Oceanic and Atmospheric Administration

2023 *West Fourchon Marsh Creation & Nourishment Project, Supplemental Environmental Assessment, Fed No. TE-0134, Lafourche Parish, Louisiana, October 2023*.



Figure 1. Project Overview Map. Proposed Federal Channel Dredging Limits are Outlined in Blue and Proposed Dredge Disposal Locations are Outlined in Yellow.

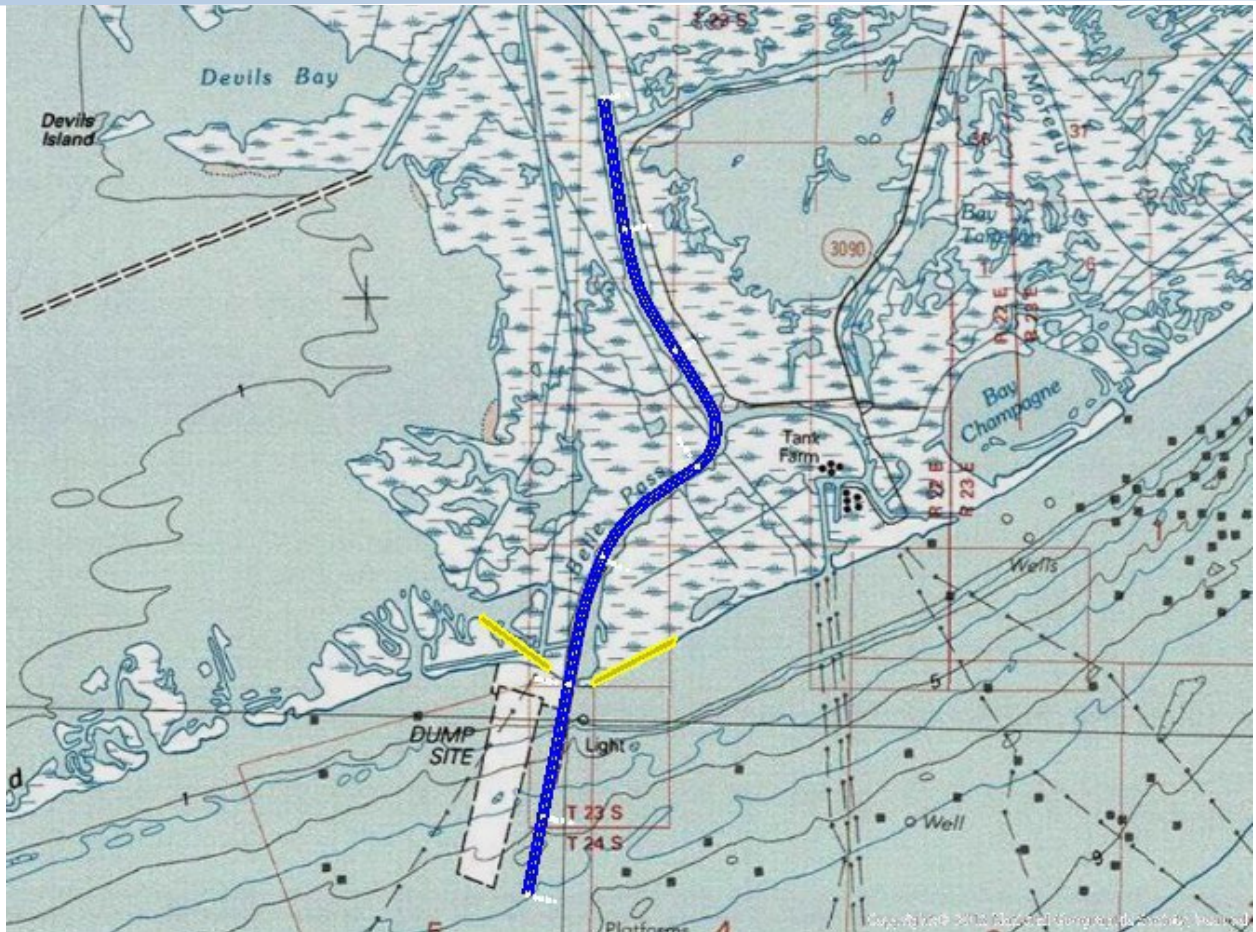


Figure 2. Project Area of Potential Effects (APE) overlaid on the Terrebonne Bay 7.5" US Topographic Map (1983).

FOUO Statement: CONFIDENTIAL DO NOT DISCLOSE. This document was prepared by the CEMVN-PDP-CSR. It is protected from public disclosure in accordance with Section 304 of the National Historic Preservation Act, 54 U.S.C. 307103, and 36 CFR 800.11 (c).

Figure 3. Project APE with Previous Cultural Resources Survey and Previously Identified Archaeological Sites/Shipwrecks Identified.

FOUO Statement: CONFIDENTIAL DO NOT DISCLOSE. This document was prepared by the CEMVN-PDP-CSR. It is protected from public disclosure in accordance with Section 304 of the National Historic Preservation Act, 54 U.S.C. 307103, and 36 CFR 800.11 (c).

Figure 4. The Northern Portion of the Inland Federal Channel with Archaeological Sites 16LF83 and 16LF249 Identified.

FOUO Statement: CONFIDENTIAL DO NOT DISCLOSE. This document was prepared by the CEMVN-PDP-CSR. It is protected from public disclosure in accordance with Section 304 of the National Historic Preservation Act, 54 U.S.C. 307103, and 36 CFR 800.11 (c).


Figure 5. The Southern Portion of the Inland Federal Channel with Archaeological Sites 16LF82, 16LF84, 16LF85, and 16LF86 identified.

FOUO Statement: CONFIDENTIAL DO NOT DISCLOSE. This document was prepared by the CEMVN-PDP-CSR. It is protected from public disclosure in accordance with Section 304 of the National Historic Preservation Act, 54 U.S.C. 307103, and 36 CFR 800.11 (c).

Figure 6. The Belle Pass Terminus and Channel Jetties with Archaeological Shipwreck Site 16LF7 indicated within the Project APE. The Proposed Dredge Disposal Sites are Outlined in Yellow.

FOUO Statement: CONFIDENTIAL DO NOT DISCLOSE. This document was prepared by the CEMVN-PDP-CSR. It is protected from public disclosure in accordance with Section 304 of the National Historic Preservation Act, 54 U.S.C. 307103, and 36 CFR 800.11 (c).

Figure 7. Proposed Dredge Disposal Areas with Previous Cultural Resources Surveys overlaid on the Belle Pass, LA 7.5" US Topographic Map (1998). The Proposed Dredge Disposal Sites are Outlined in Yellow.

From: [Ostahowski, Brian E CIV USARMY CEMVN \(USA\)](#)
To: earli@tunica.org
Cc: [Tim Martin](#)
Subject: CEMVN Port Fourchon Belle Pass Channel Deepening S106 Consultation - No Historic Properties Affected - TBTL
Date: Monday, December 4, 2023 10:59:00 AM
Attachments: [CEMVN Port Fourchon Channel Deepening S106 No Historic Properties TBTL.pdf](#) 

Dear Tribal Partner,

Attached please find a signed consultation letter:

RE: Section 106 Review Consultation

Undertaking: Port Fourchon Belle Pass Channel Deepening Maintenance and
Dredge Material Disposal, Lafourche Parish, Louisiana (Lat. 29.085480° Long.
-90.226143°)

Determination: No Historic Properties Affected

Should you have any questions or need additional information about this Undertaking, please contact me at (504) 862-2188 or brian.e.ostahowski@usace.army.mil; or Jason A. Emery, Chief of Cultural & Social Resources, (504) 862-2364 or jason.a.emery@usace.army.mil.

Thank you very much.

V/r,

Brian

Brian E. Ostahowski, MA, RPA
Archaeologist and District Tribal Liaison
U.S. Army Corps of Engineers, New Orleans District
Regional Planning and Environment Division, South
Office: 504-862-2188
Mobile: 504-884-5005
Brian.E.Ostahowski@usace.army.mil



DEPARTMENT OF THE ARMY
CORPS OF ENGINEERS, NEW ORLEANS DISTRICT
7400 LEAKE AVE
NEW ORLEANS LA 70118-3651

December 4, 2023

Regional Planning and
Environment Division, South
Environmental Planning Branch
Attn: CEMVN-PDS-N

Marshall Pierite, Chairman
Tunica-Biloxi Tribe of Louisiana
P.O. Box 1589
150 Melacon Road
Marksville, LA 71351

RE: Section 106 Review Consultation

Undertaking: Port Fourchon Belle Pass Channel Deepening Maintenance and
Dredge Material Disposal, Lafourche Parish, Louisiana (Lat.
29.085480° Long. -90.226143°)

Determination: No Historic Properties Affected

Dear Chairman Pierite:

The U.S. Army Corps of Engineers, New Orleans District (CEMVN), is preparing an Environmental Assessment (EA) to evaluate a proposed dredging maintenance and material disposal project to deepen the Belle Pass federal channel located south of Port Fourchon in Lafourche Parish, Louisiana. Recently, the National Oceanic and Atmospheric Administration (NOAA), in conjunction with the Greater Lafourche Port Commission (GLPC), completed a Supplemental EA to deepen the Belle Pass federal channel and four boat slips within the Port Fourchon shipyard (NOAA 2023). CEMVN's proposed project will further deepen the same portion of the federal channel and include a long-term dredging-maintenance operations plan for the channel after the NOAA project is completed. The GLPC is also the Non-Federal Sponsor of CEMVN's project, which is authorized by Section 203 of the Water Resources and Development Act (WRDA) of 1986 (PL 998-662), as modified by Section 1014 of Water Resources and Reform Development Act (WRRDA) 2014.

CEMVN, in partial fulfillment of responsibilities under Executive Order 13175, the National Environmental Policy Act, and Section 106 of the National Historic Preservation Act, previously initiated the consultation process for the Belle Pass federal channel deepening and dredge disposal project in 2019. As part of that initial consultation, CEMVN submitted a Draft Environmental Impact Study (DEIS) prepared by the GLPC and a cultural resources assessment and remote sensing survey prepared by Coastal Environments, Inc. (Godzinski et al. 2018). Since that time, however, the

scope and scale of CEMVN's project have been significantly reduced as a result of the NOAA project.

As part of CEMVN's evaluation and in partial fulfillment of responsibilities under the National Environmental Policy Act and Section 106 of the National Historic Preservation Act, CEMVN offers you the opportunity to review and comment on the potential of the proposed action described in this letter to affect historic properties. Additionally, in accordance with the responsibilities of Executive Order 13175, CEMVN offers Federally-recognized Tribes the opportunity to review and comment on the potential of the proposed undertaking described in this letter to significantly affect protected tribal resources, tribal rights, or tribal lands.

Description of the Undertaking

The Undertaking is located south of Port Fourchon within the Belle Pass federal channel (**Figure 1**). NOAA's Supplemental EA elevates the deepening of the federal channel to 300 feet wide to an elevation of (-) 24 feet Mean Low Gulf (MLG) on the inland reach for mile 3.4 to Mile 0.0, and to an elevation of (-) 26 feet MLG for the offshore reach from Mile 0.0 to Mile (-) 1.3. CEMVN's Undertaking will follow the same channel alignment but will deepen an additional 4 feet to an elevation of (-) 30.0 feet MLG continuing offshore to Mile 1.3, and will disposal the dredged material at two (2) sites located on the left and right of the existing channel jetties approximately 200 feet offshore. Dredging operations will utilize a hydraulic cutter-head dredge and will transport material to the disposal sites in a slurry via floating pipelines. The discharge locations are placed approximately 200 feet offshore within the shallow open waters to allow water and sediment flow for beach nourishment. Construction access for the dredge operations, attendant plant, and discharge line will be located within the open water.

Area of Potential Effects (APE)

The APE for direct and indirect effects is represented in **Figure 2**. The APE consists of the footprint of the Belle Pass federal channel and the two dredge disposal shoreline locations along Fourchon Beach. The channel dredging operations extend approximately 4.7 miles long. The eastern disposal location measures 3266 feet long by 217 feet wide (16.3 acres) and the western disposal location measures 3,020 feet long by 185 ft wide (12.8 acres) for 29.1 acres combined.

Identification and Evaluation of Historic Properties

A background and literature review utilizing the National Register of Historic Places (NRHP) database and the Louisiana Division of Archaeology (LDOA) *Louisiana Cultural Resources Map* (LDOA Website) identified that the project APE has undergone several cultural resources investigations (**Figure 3**). Newman (1976) conducted an initial reconnaissance-level cultural resources investigation of the northern portion of Belle Pass, and the entire federal channel underwent a marine remote sensing survey and desktop review conducted for CEMVN's initial Section 106 consultation (Godzinski et al. 2018). Within Belle Pass, archaeological sites 16LF7, 16LF72, 16LF83, and 16LF84

overlap with Project APE and are determined ineligible for listing in the National Register of Historic Places (Figures 4, 5, 6). Archaeological sites 16LF85, 16LF86, and 16LF249 have an undetermined NRHP eligibility status, but will be avoided by dredging operations (Figure 4 and 5).

Historical aerial images and topographic maps document the dredge disposal areas experienced significant shoreline erosion and disturbance within the last 50 years. The eastern disposal area underwent two terrestrial reconnaissance cultural resources surveys (Gagliano et al. 1976; Beavers and Lamb 1979) and two terrestrial Phase I cultural resources investigations (Braud et al. 2008; Coughlin 2012) when it was a part of the Fourchon Beach shoreline. No cultural resources were identified during these surveys (Figure 7). The initial Belle Pass channel dredging operations previously utilized the proposed western disposal area as a disposal site when it was located along Fourchon Beach before erosion retreated the shoreline to its current location (Figure 2). In addition, a submerged pipeline impacted the western portion of this disposal area (Figure 7). Considered together, previous disturbances and severe erosion have eliminated the potential for the dredge disposal areas to yield intact archaeological deposits. Last, CEMVN reviewed NOAA's Coast Survey's Automated Wreck and Obstruction Information System (AWOIS) database, which did not identify any submerged resources within the proposed disposal areas.

Assessment of Effects

Based on a background and literature review, CEMVN has determined that there are no historic properties, as defined in 36 CFR 800.16 (l) in the APE. Therefore, CEMVN is making a finding of **No Historic Properties Affected** for this undertaking and submitting it to you for review and comment. This project will be subject to the standard change in scope of work, unexpected discovery, and unmarked human burial sites act provisions. CEMVN requests your comments within 30 days, per 36 CFR 800.5(c)

We look forward to your concurrence with this determination. Should you have any questions or need additional information with this undertaking, please contact either Brian Ostahowski, Archaeologist and Tribal Liaison at (504) 862-2188 or brian.e.ostahowski@usace.army.mil; or Jason A. Emery, Chief of Cultural & Social Resources, (504) 862-2364 or jason.a.emery@usace.army.mil.

Sincerely,

WILLIAMS.ERIC
C.MITCHELL
1065454323
ERIC M. WILLIAMS
Chief, Environmental Planning Branch

Digitally signed by
WILLIAMS.ERIC.MITCHELL
1065454323
Date: 2023.12.04
09:33:02 -06'00'



1. LA SHPO
2. Chitimacha Tribe of Louisiana
3. Coushatta Tribe of Louisiana
4. Jena Band of Choctaw Indians
5. Mississippi Band of Choctaw Indians
6. Tunica-Biloxi Tribe of Louisiana

References:

Beavers, Richard and Teresia Lamb

1979 *A Level I Cultural Resources Survey and Assessment of Fourchon Island, Lafourche Parish, Louisiana*. Report prepared by the University of New Orleans for the Edward Wisner Donation Advisory Committee (LA DOA Report No. 22-0645).

Braud, Melissa R. with contributions by: Richard A. Weinstein, Paul V. Heinrich, William D. Reeves, Donald Davis, George J. Castille III and Joanne Ryan

2008 *Cultural Resources Survey of the Caminada Headland Restoration Feasibility Study, Lafourche and Jefferson Parishes, Louisiana*. Report prepared by Coastal Environments, Inc. for T. Baker Smith, Inc. (LA DOA Report No. 22-2966).

Coughlin, Sean

2012 *Negative Findings Report Related to the Phase I Cultural Resources Investigation of the Caminada Headland Beach Resotation Area in LaFourche Parish, Louisiana*. Report prepared by R. Christopher Goodwin & Associates, Inc. for Coastal Engineering Consultants, Inc. (LA DOA Report No. 22-3966).

Gagliano, Sherwood, M., Richard A. Weinstein, and Eileen K. Burden

1976 *Archaeological Survey of the Port Fourchon Area, Lafourche Parish, Louisiana*. Report prepared by Coastal Environments, Inc. for the Greater Lafourche Port Commission (LA DOA Report No. 22-0002).

Godzinski, Michael, Dyane B. Lee, Elizabeth V. Williams, Donna Greer, and Elena Ricci.

2018 *Cultural Resources Assessment for the Port Fourchon Project and Results of an Initial Remote Sensing Marine Survey, Lafourche Parish, Louisiana*. Report prepared by Coastal Environments, Inc. for GIS Engineering, LLC. (LA DOA Report No. 22-6170).

National Oceanic and Atmospheric Administration

2023 *West Fourchon Marsh Creation & Nourishment Project, Supplemental Environmental Assessment, Fed No. TE-0134, Lafourche Parish, Louisiana, October 2023*.



Figure 1. Project Overview Map. Proposed Federal Channel Dredging Limits are Outlined in Blue and Proposed Dredge Disposal Locations are Outlined in Yellow.

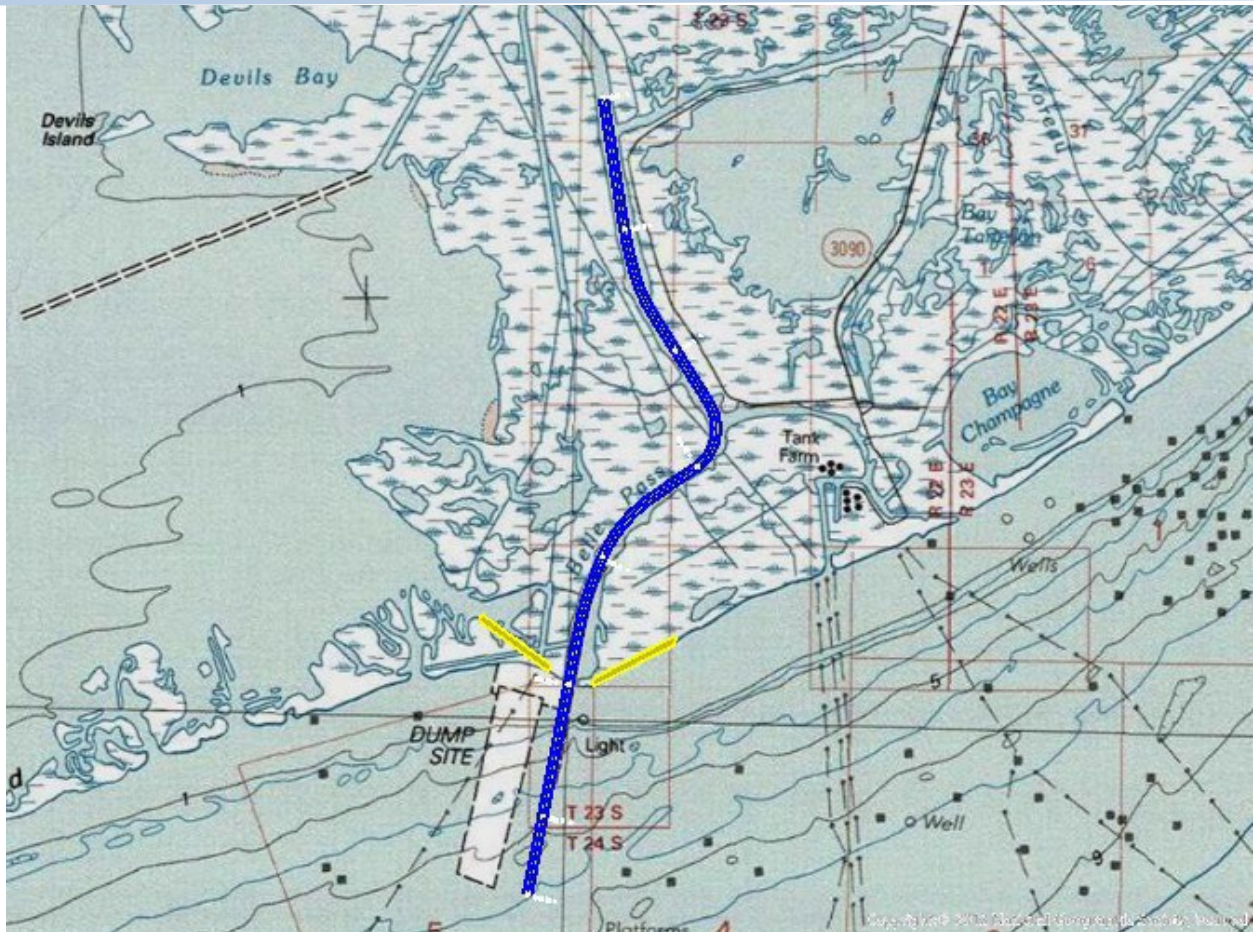


Figure 2. Project Area of Potential Effects (APE) overlaid on the Terrebonne Bay 7.5" US Topographic Map (1983).

FOUO Statement: CONFIDENTIAL DO NOT DISCLOSE. This document was prepared by the CEMVN-PDP-CSR. It is protected from public disclosure in accordance with Section 304 of the National Historic Preservation Act, 54 U.S.C. 307103, and 36 CFR 800.11 (c).

Figure 3. Project APE with Previous Cultural Resources Survey and Previously Identified Archaeological Sites/Shipwrecks Identified.

FOUO Statement: CONFIDENTIAL DO NOT DISCLOSE. This document was prepared by the CEMVN-PDP-CSR. It is protected from public disclosure in accordance with Section 304 of the National Historic Preservation Act, 54 U.S.C. 307103, and 36 CFR 800.11 (c).

Figure 4. The Northern Portion of the Inland Federal Channel with Archaeological Sites 16LF83 and 16LF249 Identified.

FOUO Statement: CONFIDENTIAL DO NOT DISCLOSE. This document was prepared by the CEMVN-PDP-CSR. It is protected from public disclosure in accordance with Section 304 of the National Historic Preservation Act, 54 U.S.C. 307103, and 36 CFR 800.11 (c).

Figure 5. The Southern Portion of the Inland Federal Channel with Archaeological Sites 16LF82, 16LF84, 16LF85, and 16LF86 identified.

FOUO Statement: CONFIDENTIAL DO NOT DISCLOSE. This document was prepared by the CEMVN-PDP-CSR. It is protected from public disclosure in accordance with Section 304 of the National Historic Preservation Act, 54 U.S.C. 307103, and 36 CFR 800.11 (c).

Figure 6. The Belle Pass Terminus and Channel Jetties with Archaeological Shipwreck Site 16LF7 indicated within the Project APE. The Proposed Dredge Disposal Sites are Outlined in Yellow.

FOUO Statement: CONFIDENTIAL DO NOT DISCLOSE. This document was prepared by the CEMVN-PDP-CSR. It is protected from public disclosure in accordance with Section 304 of the National Historic Preservation Act, 54 U.S.C. 307103, and 36 CFR 800.11 (c).

Figure 7. Proposed Dredge Disposal Areas with Previous Cultural Resources Surveys overlaid on the Belle Pass, LA 7.5" US Topographic Map (1998). The Proposed Dredge Disposal Sites are Outlined in Yellow.